

References by activity



# Construction





CONSTRUCTION

## 7000 BUILDING

**LOCATION** ▶ Aljaraque. Huelva (Spain)

**CUSTOMER** ▶ Huelva Science and Technology Park

**PROJECT SCOPE:**

Consortium construction of the building for the New Innovation and Technology Transfer Centre at the Huelva Science and Technology Park

**AMOUNT** ▶ EUR 20 million (ENO 50%)

**START DATE** ▶ august 2011

**FINISH DATE** ▶ january 2013

**CHARACTERISTICS:**

- ▶ Surface area: 8,520 m<sup>2</sup>, with 4,668 m<sup>2</sup> underground parking space
- ▶ Foundations: concrete piles, bracing slab and sealed concrete perimeter walls
- ▶ Reinforced concrete and metal structure
- ▶ Outer curtain wall cladding with glass finish
- ▶ Roofing with greenery and PV panels
- ▶ Wiring
- ▶ Mechanical facilities: sanitation, plumbing, city gas air conditioning, ventilation and lifts
- ▶ Comprehensive centralised management system
- ▶ Fire protection system
- ▶ Voice-data facility: installation of 92 m<sup>2</sup> DPC with 16 multimodal optic fibre backbone lines with 12 bi-fibres each; installation of 61 partial racks



SPAIN

Aljaraque. Huelva (Spain)

CONSTRUCTION

# 7000 BUILDING





**elecnor**

CONSTRUCTION

# AEROPOLIS BUILDING

**LOCATION** ▶ La Rinconada. Sevilla (Spain)

**CUSTOMER** ▶ Parque Tecnológico y Aeronáutico de Andalucía

## PROJECT SCOPE:

Consortium construction of two office blocks on plots 72 and 73 of the Andalusian Technology and Aeronautics Park - 8,347 m<sup>2</sup> and 10 storeys, with 2 basements each

**AMOUNT** ▶ EUR 20 million (ENO 50%)

**START DATE** ▶ february 2010

**FINISH DATE** ▶ march 2012

## CHARACTERISTICS:

- ▶ Groundworks: excavation to -8 m.
- ▶ Foundations: 100 cm reinforced concrete base and 30 cm perimeter walls.
- ▶ Soil enhancement with an injection of a stable cement-bentonite mix.
- ▶ Load-bearing structure: combination of steel and concrete.
- ▶ Horizontal structure: heavy-duty reinforced concrete slabs.
- ▶ Facades: double galvanised steel sandwich panels. Double glazing.
- ▶ Flooring: transit areas in polished natural stone, brightened in situ. Office areas with accessible technical flooring.
- ▶ Accessible false ceiling for equipment.
- ▶ Cold drinking water: connection from mains supply to the water tank, with pressurised distribution to the entire building.
- ▶ Hot water for sanitation: on the roof of a solar farm of thermal arrays.
- ▶ Electricity supply: contribution of photovoltaic panels (12.25 Kwp).
- ▶ Telecommunications: Voice backbone (TB and RDSI) and data backbone
- ▶ Lifts for 8 people (maximum load 630 kg)



SPAIN

La Rinconada. Sevilla (Spain)

CONSTRUCTION

# AEROPOLIS BUILDING





## CONSTRUCTION **CAIXABANK** **"STORE" OFFICES**

**LOCATION** ▶ Barcelona (Spain)

**CUSTOMER** ▶ Sumasa - Caixabank

**PROJECT SCOPE** ▶

Complete reform of various Caixabank offices to adapt them to the new "store" concept. (Demolition, civil works, finishing touches and complete installation).

**AMOUNT** ▶ EUR 18 million

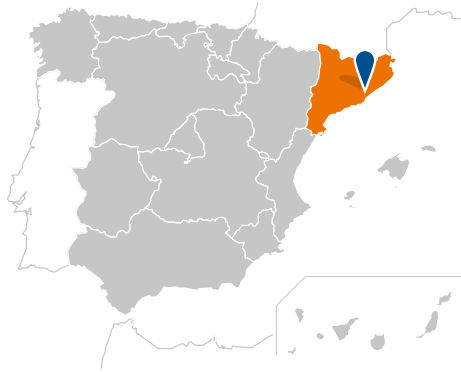
**START DATE** ▶ 2016

**FINISH DATE** ▶ Depending on store



SPAIN  
Barcelona

CONSTRUCTION  
**CAIXABANK**  
"STORE" OFFICES





CONSTRUCTION

# CARRER PAMPLONA 104 BUILDING

**LOCATION** ▶ Barcelona (Spain)

**CUSTOMER** ▶ Albion Real Estate Management, S.L.

**PROJECT SCOPE** ▶

Newly constructed office building in the 22@ financial district, with a ventilated facade made mostly from ceramic cladding panels. Gold LEED rating.

**AMOUNT** ▶ EUR 6.6 million

**START DATE** ▶ August 2020

**FINISH DATE** ▶ September 2021

**CHARACTERISTICS:**

- ▶ 6,348 m<sup>2</sup> built
- ▶ Floor plan
  - ✓ Vertical communications and toilets; common area where the stairs and three lifts are located. Corresponds to the chamfered street
  - ✓ Offices and space with diaphanous surfaces, maximising sunlight
- ▶ Functional plan of the building
  - ✓ Two floors below ground level: parking, mechanical rooms, facilities and staff changing rooms
  - ✓ One ground floor: main access, vertical communication cores, reception, office space, toilets and mechanical room
  - ✓ Five standard floors: offices, toilets and vertical communication cores
  - ✓ One floor with cover: terrace for occasional use, mechanical rooms and facilities

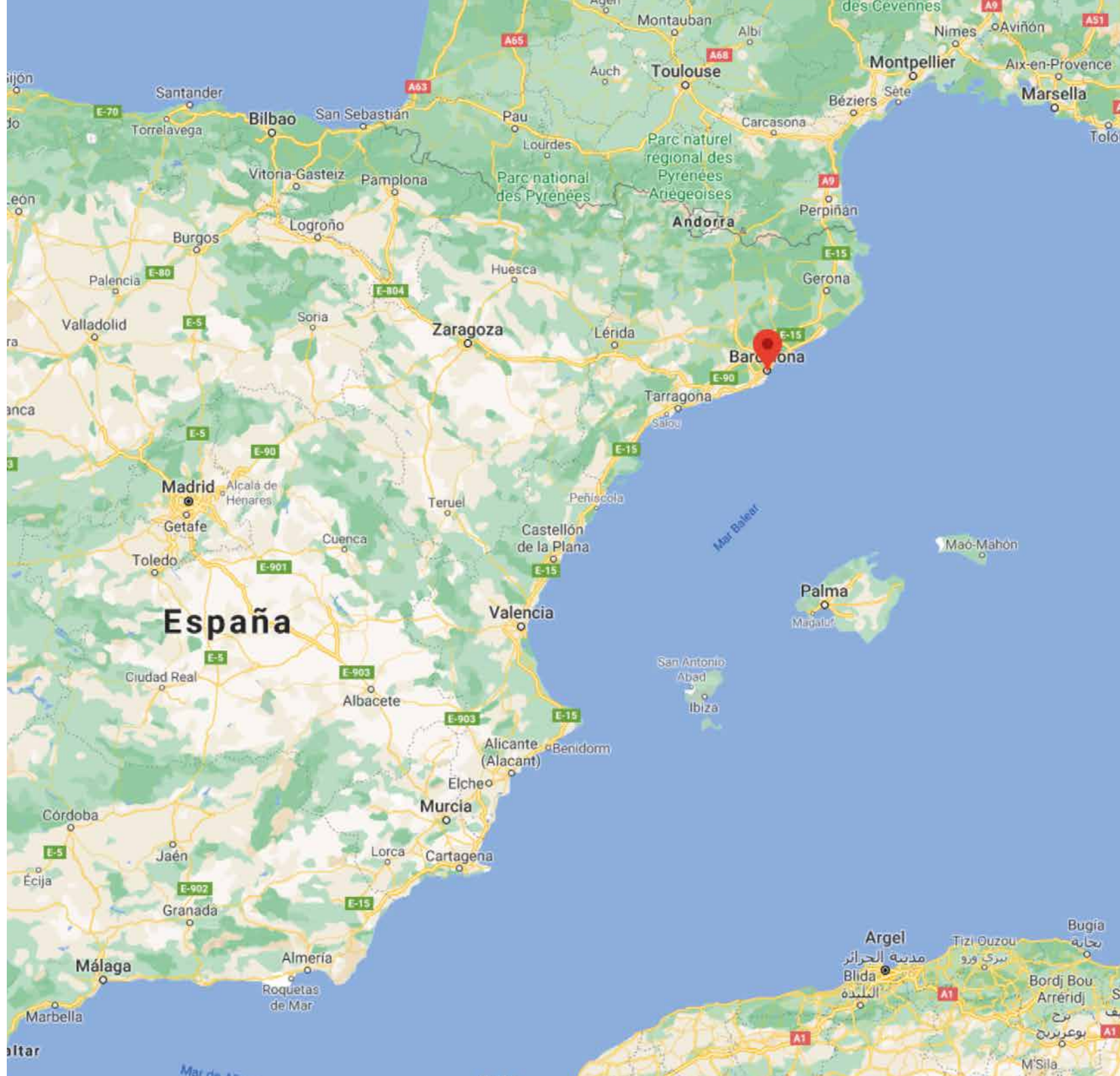




**SPAIN**  
Barcelona

CONSTRUCTION

# CARRER PAMPLONA 104 BUILDING





## CONSTRUCTION

# CASA DE LAS ARTES

**LOCATION** ▶ Cádiz (Spain)

**CUSTOMER** ▶ Education Department, Regional Government of Andalusia

### PROJECT SCOPE:

Design and construction of the Casa de las Artes educational facility in Cádiz for 1,575 music, dance and art students. It consists of 3 buildings with a ground floor and three more storeys, and a transversal structure with a ground floor and two more storeys with spaces for common use

**AMOUNT** ▶ EUR 7 million

**START DATE** ▶ july 2010

**FINISH DATE** ▶ july 2012

### CHARACTERISTICS:

- ▶ Built area of 16,230 m<sup>2</sup> on a plot of 8,668 m<sup>2</sup>
- ▶ Capacity for 1,575 students:
  - ✓ 430 in the Dance Conservatory
  - ✓ 700 in the Music Conservatory
  - ✓ 445 in the Art School
- ▶ Foundations
- ▶ Concrete and metal structure
- ▶ Outer cladding of facade
- ▶ Roofing
- ▶ Internal divisions and claddings
- ▶ Wiring
- ▶ Mechanical facilities
- ▶ Comprehensive centralised management system
- ▶ Fire protection system
- ▶ Voice/data facility
- ▶ Metalwork
- ▶ Woodwork
- ▶ Landscaping



SPAIN  
Cádiz (Spain)

CONSTRUCTION  
**CASA DE  
LAS ARTES**





**elecnor**

## CONSTRUCTION **COURTHOUSE**

**LOCATION** ▶ San Sebastián (Spain)

**CUSTOMER** ▶ Basque Regional Government

**PROJECT SCOPE:**

Complete refurbishment of San Sebastián courthouse (Provincial Court)

**AMOUNT** ▶ EUR 10 million

**START DATE** ▶ december 2003

**FINISH DATE** ▶ december 2006

**CHARACTERISTICS:**

- ▶ Demolition of interior
- ▶ Reinforcement of composite flooring
- ▶ Internal divisions
- ▶ Full restoration of sandstone facade and roof
- ▶ Fine hardwood cladding inside the building
- ▶ Restoration of stained-glass windows
- ▶ Roof skylight
- ▶ Work on sanitation, plumbing, heating, ventilation, air conditions, electrical system, lighting, gas, voice-data system, PA system, CCTV, fire detection, access control and security, water-mist firefighting system



SPAIN

San Sebastián (Spain)

CONSTRUCTION  
**COURTHOUSE**





**elecnor**

CONSTRUCTION

# DATA PROCESSING UNIT

**LOCATION** ▶ Cerdanyola del Vallès (Spain)

**CUSTOMER** ▶ La Caixa

**PROJECT SCOPE:**

Construction of the building for the New CD2 Data Processing Unit for La Caixa

**AMOUNT** ▶ EUR 24 million

**START DATE** ▶ january 2014

**FINISH DATE** ▶ april 2015

**CHARACTERISTICS:**

- ▶ Surface area: 9,405 m<sup>2</sup>
- ▶ Foundations: concrete piles and pile caps
- ▶ Structure: poured concrete at building A and prefab concrete at buildings B and C (prefab pillars-girder beams and hollow-core slabs)
- ▶ Wiring (LV and MV)
- ▶ Mechanical facilities: sanitation, plumbing, air conditioning, ventilation and lifts
- ▶ Comprehensive centralised management system
- ▶ Fire protection system (detection, sprinklers, fire hose cabinets, hydrants and water-mist system)



SPAIN

Cerdanyola del Vallès (Spain)

CONSTRUCTION

# DATA PROCESSING UNIT





## CONSTRUCTION/FACILITIES **DIAGONAL 605 OFFICE BUILDING**

**LOCATION** ▶ Barcelona (Spain)

**CUSTOMER** ▶ Merlin Properties

**PROJECT SCOPE** ▶

Renovation of an office building built in 1988 to increase functionality and accessibility.

**AMOUNT** ▶ EUR 6.3 million

**START DATE** ▶ July 2019

**FINISH DATE** ▶ October 2020

**CHARACTERISTICS:**

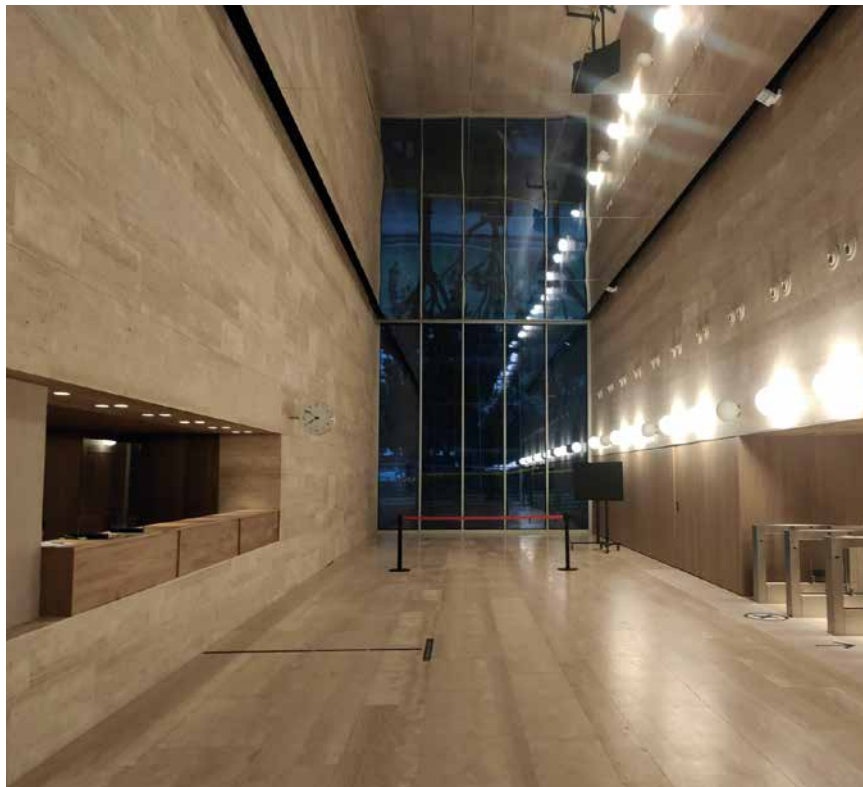
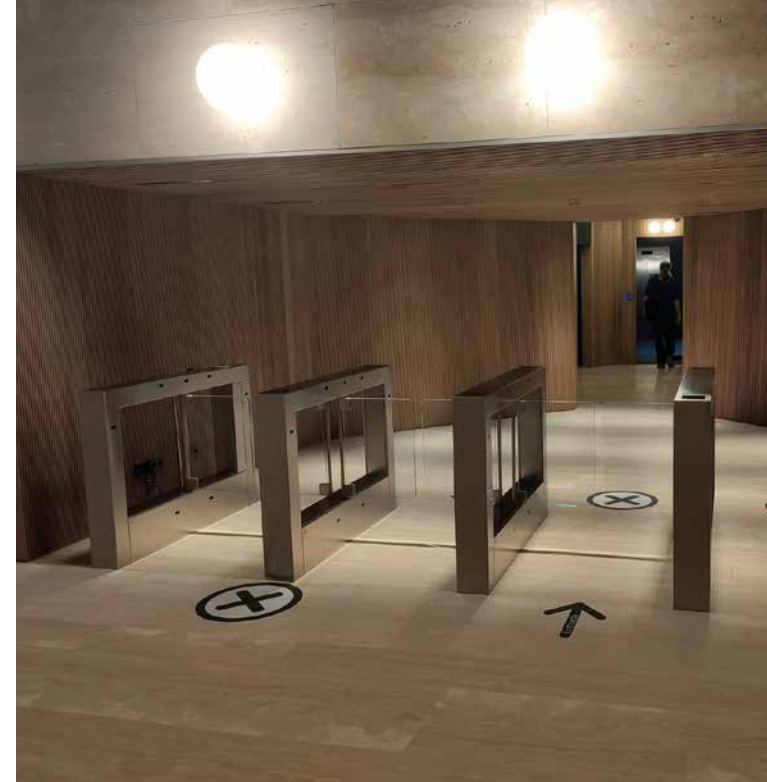
- ▶ Remodelling low-level floors, communal areas, surroundings and façades.
- ▶ Redesigning the existing entrance hall to make it proportionate to the size of the building and increase natural light.
- ▶ Moving the location of the car park to increase security.
- ▶ Bringing the building level with the public road (it is below street level) to eliminate the need for stairs and improve accessibility.
- ▶ Updating finishing touches to give a contemporary look; improving spaces; modernising lifts and the electricity, heating, air conditioning, communications and fire protection systems.





 **SPAIN**  
Barcelona

CONSTRUCTION/FACILITIES  
**DIAGONAL 605  
OFFICE BUILDING**





## CONSTRUCTION EXTENSION OF PELLET PRODUCTION HALL

**LOCATION** ▶ El Burgo de Ebro,  
Zaragoza (Spain)

**CUSTOMER** ▶ Saica Natur Cycle Plus 2020, S.L.

**PROJECT SCOPE** ▶

Building and urbanisation to extend the pellet production hall. This includes the execution of installations: a main building, a building dedicated to workshop tasks, extension of the treatment annex, a decanter, underground networks and urbanisation.

The pellets consist of washed mineral coal, the fragments of which must be regulation size (between 15 and 25 mm). This material is produced by extrusion, usually as part of the material recycling process.

**AMOUNT** ▶ EUR 1.9 million

**CHARACTERISTICS:**

- ▶ Urbanisation of an area covering 10,000 m<sup>2</sup>
- ▶ 2000 m<sup>2</sup> prefab concrete production hall
- ▶ Several metal-structure buildings
- ▶ Galvanised steel rack for installations running the length of the production hall



SPAIN

El Burgo de Ebro, Zaragoza

CONSTRUCTION

# EXTENSION OF PELLET PRODUCTION HALL





## CONSTRUCTION

# GRIFFITH LABORATORIES

**LOCATION** ▶ Valls, Tarragona (Spain)

**CUSTOMER** ▶ Griffith Laboratories

### PROJECT SCOPE

Complete buildings and facilities of some new laboratories in a 7,000 m<sup>2</sup> plant designed to expand the production line for liquid condiments

**AMOUNT** ▶ EUR 6 million

**START DATE** ▶ January 2016

**FINISH DATE** ▶ June 2016

### CHARACTERISTICS:

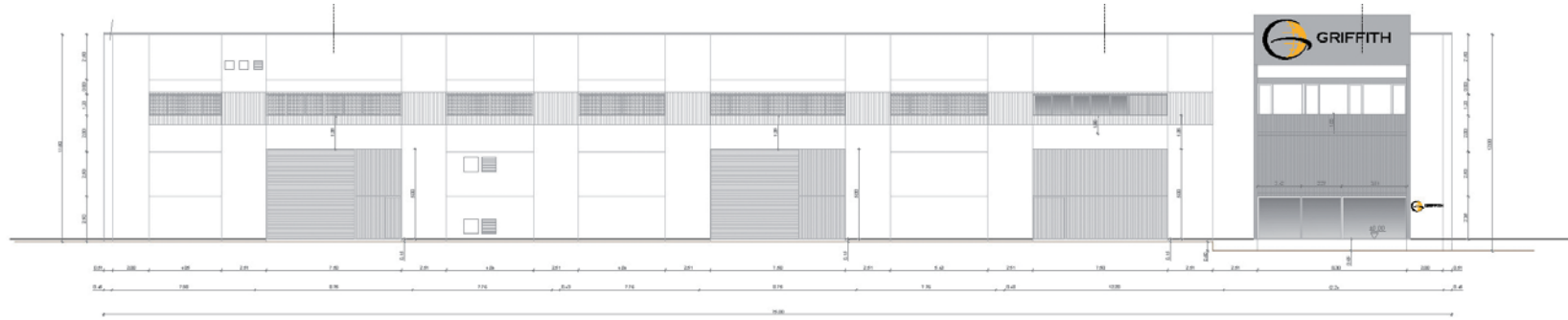
- ▶ Foundations
- ▶ Structure
- ▶ Landscaping
- ▶ Internal architecture
- ▶ Wiring (MV and LV)
- ▶ Mechanical facilities
- ▶ HVAC systems
- ▶ Ventilation
- ▶ Fire protection
- ▶ Plumbing
- ▶ Sanitation
- ▶ Voice and data
- ▶ Steam
- ▶ Compressed air
- ▶ Access control
- ▶ CCTV
- ▶ Intrusion and security



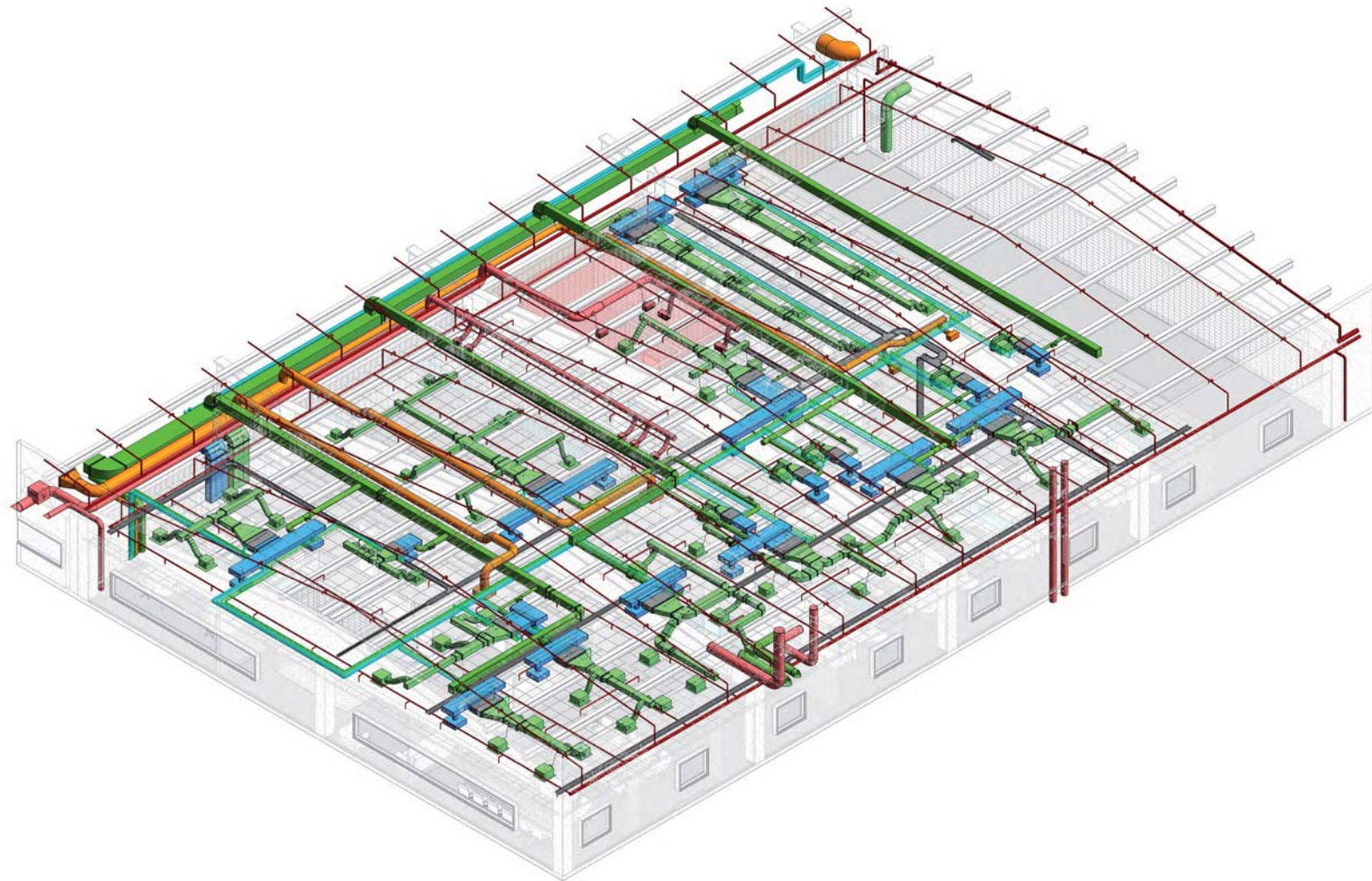
SPAIN

Valls. Tarragona (Spain)

CONSTRUCTION  
**GRIFFITH  
LABORATORIES**



FACADE A





CONSTRUCTION

# HIGH SCHOOL BN ROTA

**LOCATION** ▶ Rota. Cádiz (Spain)

**CUSTOMER** ▶ Rota Naval Base

**PROJECT SCOPE:**

Consortium construction of the US Government Naval Base in Rota's High School Addition

**AMOUNT** ▶ EUR 18 million (ENO 50%)

**START DATE** ▶ december 2007

**FINISH DATE** ▶ march 2010

**CHARACTERISTICS:**

- ▶ Surface area: 6,600 m<sup>2</sup> on 2 storeys
- ▶ Demolition and removal of old buildings
- ▶ Construction of the new structure of a main two-storey building and two single-storey ancillary areas
- ▶ Concrete outer walls in concrete and concrete composites on concrete beams and foundation shoes
- ▶ Tiled roof on slabs with a one-way composite system
- ▶ Includes sanitation facilities, plumbing, mechanical facilities and controls for air conditioning, wiring, fire detection and protection equipment, PA system and centralised control system, indoor wooden furnishings, gardening and outdoor furnishings



SPAIN

Rota. Cádiz (Spain)

CONSTRUCTION

# HIGH SCHOOL BN ROTA





**elecnor**

CONSTRUCTION  
**HOSPITAL  
GENERAL PALMA  
DE MALLORCA**

**LOCALIZACIÓN** ▶ Palma de Mallorca  
(Balearic Islands)

**CLIENTE** ▶ IBSALUT (Servei de Salut de les  
Illes Balears)

**ALCANCE** ▶

Refurbishment of the old surgical unit, which was  
already out of use, to create a new consultation  
area.

**IMPORTE** ▶ EUR 1.2 million

**INICIO** ▶ November 2019

**FIN** ▶ September 2020

**CARACTERÍSTICAS:**

- ▶ 858 m<sup>2</sup>
- ▶ 21 consultation areas for Ophthalmology,  
Traumatology, Dermatology, Cardiology,  
Digestive and Anaesthesia services
- ▶ Other tenders also involved the renovation of 17  
rooms for the hospitalisation unit and the  
renovation of the radiology unit

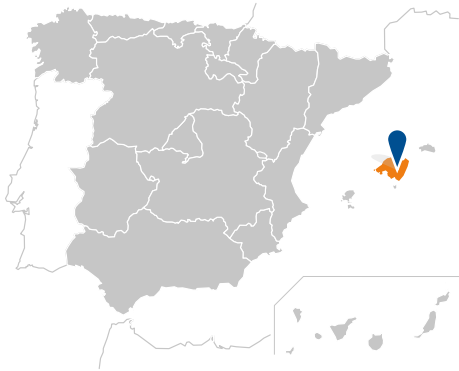




SPAIN

Palma de Mallorca (Balearic Islands)

CONSTRUCTION  
**HOSPITAL  
GENERAL PALMA  
DE MALLORCA**





CONSTRUCTION

# MUNDO BUILDING

**LOCATION** ▶ Aldaia. Valencia (Spain)

**CUSTOMER** ▶ Riofisa

**PROJECT SCOPE:**

Construction of a special building for commercial premises, a gym and office space on two levels

**AMOUNT** ▶ EUR 5 million

**START DATE** ▶ december 2001

**FINISH DATE** ▶ may 2002

**CHARACTERISTICS:**

- ▶ Foundations
- ▶ Reinforced concrete and metal structure
- ▶ Non-traversable deck-type inverted gym roof
- ▶ Prefabricated lacquered sheet steel cladding
- ▶ Curtain walls
- ▶ 20x20x40 preformed concrete blocks
- ▶ Metalwork
- ▶ Wiring
- ▶ Gas installations
- ▶ HVAC systems
- ▶ Ventilation
- ▶ Plumbing and sanitation
- ▶ Fire protection and detection system
- ▶ Telecommunications



SPAIN

Aldaia. Valencia (Spain)

CONSTRUCTION

# MUNDO BUILDING





CONSTRUCTION  
**RENTA BADAJOZ  
112-114 OFFICES**

**LOCATION** ▶ Barcelona (Spain)

**CUSTOMER** ▶ Renta Corporación Real Estate S.A.

**PROJECT SCOPE** ▶

Project development and construction of the new office building for Renta Corporación on Carrer de Badajoz street of Barcelona's 22@ financial district. Construction, facilities and systems.

**AMOUNT** ▶ EUR 3.9 million

**START DATE** ▶ October 2019

**FINISH DATE** ▶ October 2020

**CHARACTERISTICS:**

- ▶ Plot surface area, 530 m<sup>2</sup>
- ▶ Earth moving and foundations
- ▶ Structure and enclosures
- ▶ Cover
- ▶ Interior partitioning
- ▶ Air conditioning system
- ▶ Facilities and services
- ▶ Finishing touches





SPAIN  
Barcelona

CONSTRUCTION  
**RENTA BADAJOZ**  
**112-114 OFFICES**



**elecnor**

**ehisa**  
elecnor group



## CONSTRUCTION/FACILITIES TORRE VILLAGE COMMERCIAL CENTRE

**LOCATION** ▶ Zaragoza (Spain)

**CUSTOMER** ▶ Iberebro, S.A.

**PROJECT SCOPE** ▶

Construction of the first phase of the Torre Village Commercial and Leisure Centre in the grounds of the former Pikolin factory.

**AMOUNT** ▶ EUR 19 million

**START DATE** ▶ October 2019

**FINISH DATE** ▶ August 2020

### CHARACTERISTICS:

- ▶ Construction of the M1 block, consisting of a set of local commercial premises on the ground floor, with direct access from a main road
- ▶ Complete installation to cover the internal and shared areas
- ▶ Civil works and installation corresponding to the cinemas



CONSTRUCTION/FACILITIES  
**TORRE VILLAGE  
COMMERCIAL  
CENTRE**





## CONSTRUCTION VIP ROOMS AT EL PRAT AIRPORT

**LOCATION** ▶ El Prat de Llobregat,  
Barcelona (Spain)

**CUSTOMER** ▶ Aena

**PROJECT SCOPE** ▶

Complete reform, improvement and adaptation of civil works and facilities of the VIP Rooms at Barcelona Airport (three VIP rooms in T1 [Colomer, Joan Miró and Pau Casals] as well as the Canudes VIP room in T2).

**AMOUNT** ▶ EUR 8 million

**START DATE** ▶ September 2018

**FINISH DATE** ▶ November 2019

**CHARACTERISTICS:**

- ▶ Execution in two phases (except for Canudes), maintaining operation of the rooms while the work was being carried out
- ▶ Doubling the surface area of the VIP Rooms
- ▶ Complete demolition of the rooms and reconstruction (civil works, counters, catering furniture, kitchen equipment, extractor hoods, storage rooms and customised furniture and decorative features)
- ▶ Low-voltage installations, air conditioning and improvements in energy efficiency
- ▶ Plumbing, sanitation and fire protection





SPAIN

El Prat de Llobregat, Barcelona

CONSTRUCTION

# VIP ROOMS AT EL PRAT AIRPORT





**elecnor**

CONSTRUCTION

# HAITI HOSPITAL

**LOCATION** ▶ Port-au-Prince (Haiti)

**CUSTOMER** ▶ Haitian Ministry of Finance

**PROJECT SCOPE:**

Fast-track design and construction of the Haiti University Hospital

**AMOUNT** ▶ EUR 40 million

**START DATE** ▶ february 2014

**FINISH DATE** ▶ 2016

**CHARACTERISTICS:**

- ▶ 22,500 m<sup>2</sup>, with over 500 beds, 10 operating theatres and an outpatient service.
- ▶ The project involves 9 blocks built around a central boulevard.
- ▶ The various blocks are connected by a gangway system to unify the structure and provide additional space should this be required. The main features of the project are its light and natural ventilation.
- ▶ The secondary building will house all the hospital's facilities and services, and will be connected to the main building by a gangway



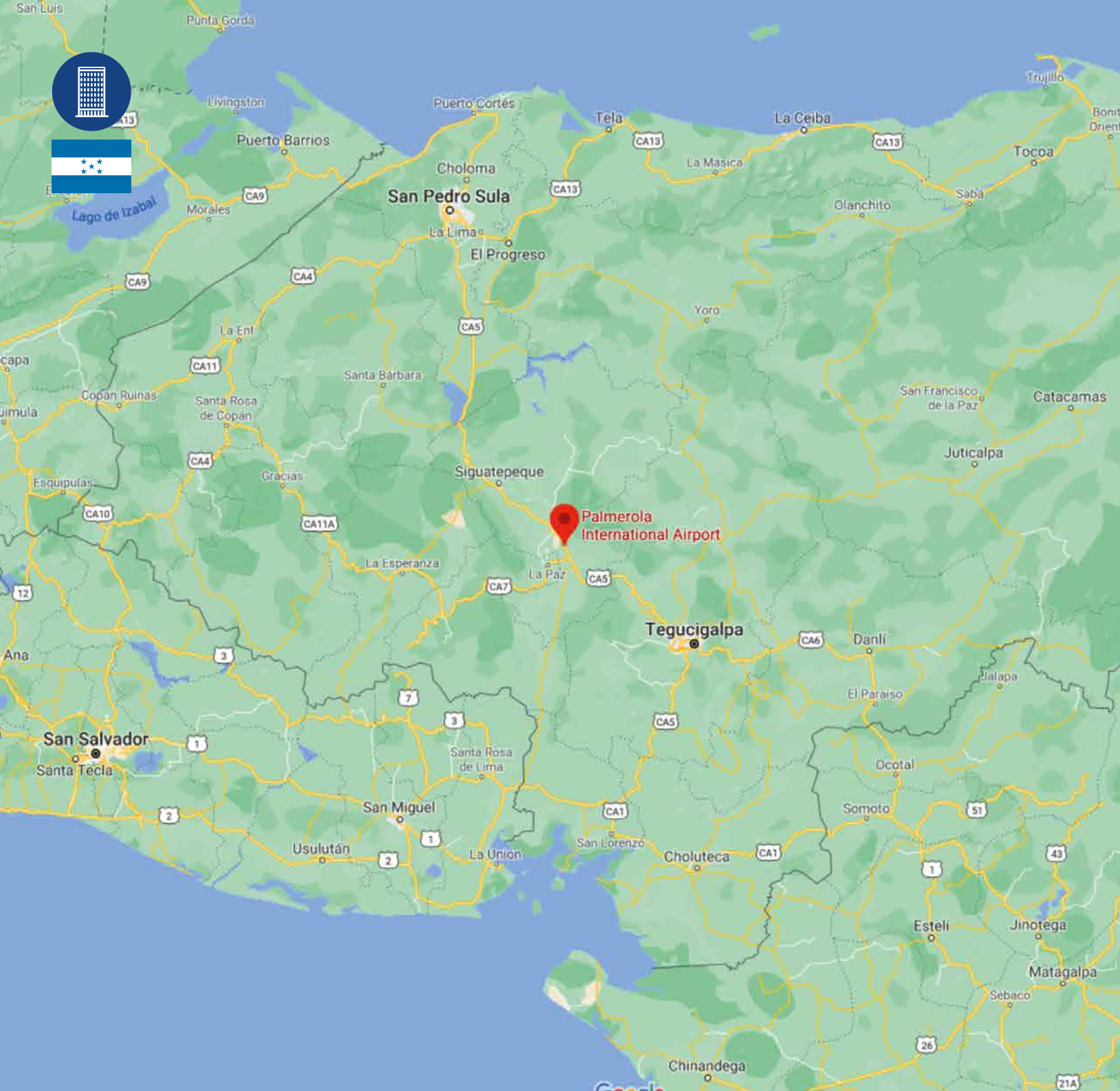
CENTRAL AMERICA

Port-au-Prince (Haiti)

CONSTRUCTION

# HAITI HOSPITAL





## CONSTRUCTION **PALMEROLA INTERNATIONAL AIRPORT**

**LOCATION** ▶ Comayagua (Honduras)

**CUSTOMER** ▶

INSEP (Secretaría de Infraestructura y Servicios Públicos-Secretariat for Infrastructure and Public Services)

**PROJECT SCOPE** ▶

Construction of the new power station, medium-voltage rings, runway beacons, control tower and fire station at the new international airport.

**AMOUNT** ▶ EUR 25 million (ENO EUR 14 million)

**START DATE** ▶ October 2020

**FINISH DATE** ▶ March 2022

**CHARACTERISTICS:**

- ▶ **POWER STATION**
  - ✓ Two physically separated redundant bars with two protection cabinets in reserve
  - ✓ Three 2,500 KVA generator sets that will generate a voltage of 6.3 kV
  - ✓ Three 34.5 kV distribution rings
- ▶ **CONTROL TOWER**
  - ✓ 32.85 m tall
- ▶ **FIRE STATION**
  - ✓ 5,200 m<sup>2</sup>
  - ✓ Emergency vehicles with direct access to the runway
  - ✓ Strategic location to give a view of the entire runway area



CENTRAL AMERICA  
Comayagua (Honduras)

CONSTRUCTION

# PALMEROLA INTERNATIONAL AIRPORT





## CONSTRUCTION R+15 BUILDING

**LOCATION** ▶ Nouakchott (Mauritania)

**CUSTOMER** ▶ Societe Nationale Industrielle et Miniere (SNIM)

**PROJECT SCOPE** ▶

Complete and correct construction and outfitting work on all areas of a 15 storey building (R+15)

**AMOUNT** ▶ EUR 17 million

**START DATE** ▶ May 2013

**FINISH DATE** ▶ January 2018

**CHARACTERISTICS:**

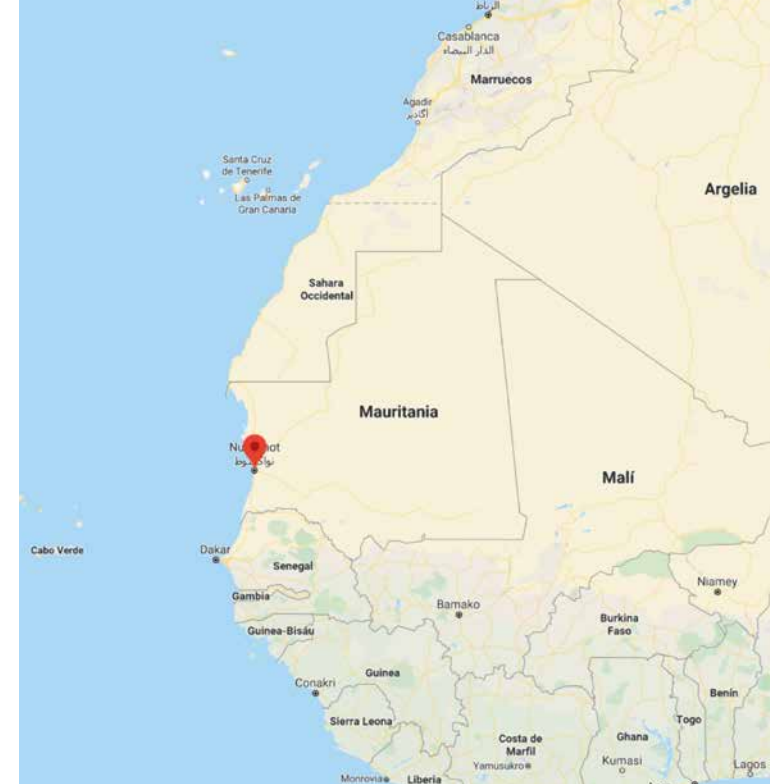
- ▶ The tallest building in Nouakchott and the first one primarily for office use
- ▶ Lower floors for commercial premises and catering establishments
- ▶ Curved façade on the sides and glass façade on the two main sides
- ▶ Underground parking with capacity for 40 vehicles
- ▶ Surface area of 22,000 m<sup>2</sup>
- ▶ Main installations:
  - ✓ Escalators
  - ✓ Lifts and service lifts
  - ✓ Fire protection and detection installations
  - ✓ HVAC
  - ✓ Smoke extraction system
  - ✓ Video surveillance and access control
  - ✓ Voice and data communications
  - ✓ Electricity
  - ✓ forklift



AFRICA

Nouakchott (Mauritania)

CONSTRUCTION  
**R+15 BUILDING**





**elecnor**

CONSTRUCTION

# DAVID HOSPITAL

**LOCATION** ▶ David, Chiriquí province (Panama)

**CUSTOMER** ▶ Caja del Seguro Social

**PROJECT SCOPE:**

Survey work, design and construction of the extension to the Dr. Rafael Hernández specialist hospital, featuring a new block for external consultations and a medical/surgical block

**AMOUNT** ▶ EUR 26 million

**START DATE** ▶ march 2013

**FINISH DATE** ▶ may 2016

**CHARACTERISTICS:**

- ▶ 50,000 m<sup>2</sup>
- ▶ The full functional programme, including the old hospital's facilities, will have the following services:
  - ✓ 8 imaging exploration rooms
  - ✓ 14 emergency consultation facilities
  - ✓ 854 parking spaces
  - ✓ 62 medical units
  - ✓ 12 operating theatres
  - ✓ 600 beds
- ▶ The project is in two phases - phase one concerns external consultations and specialist services, while phase two focuses on hospitalisation and the surgical unit





CENTRAL AMERICA

David, Chiriquí province (Panama)

CONSTRUCTION

# DAVID HOSPITAL





elecnor

elecnor.com